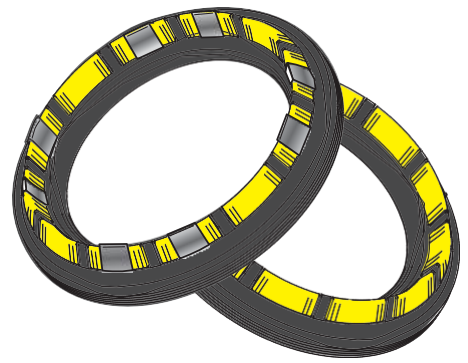
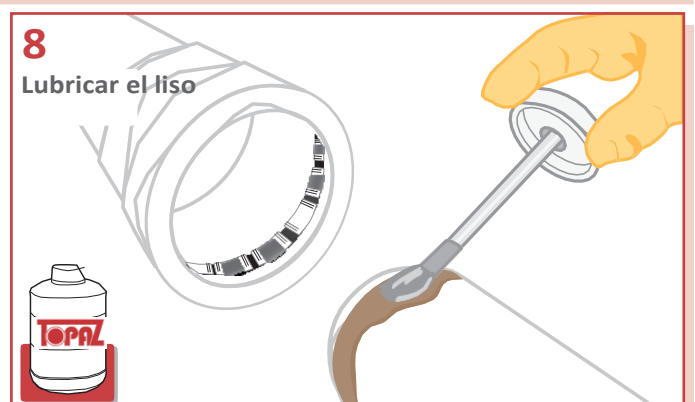
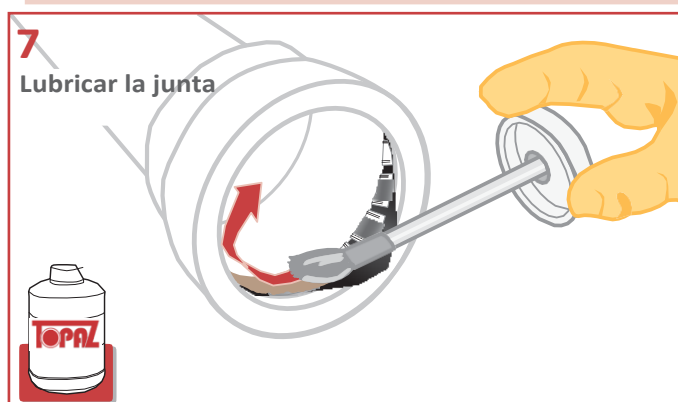
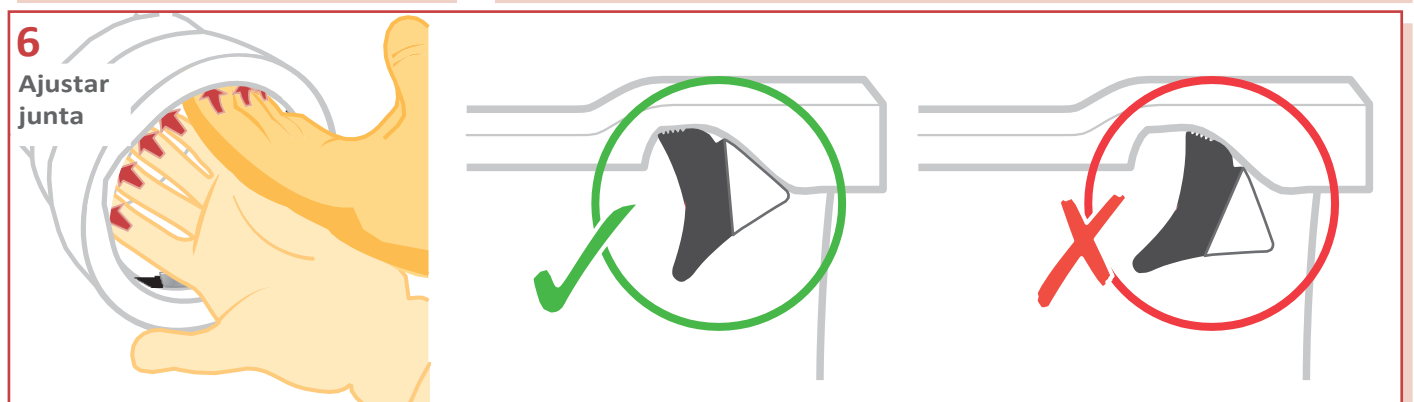
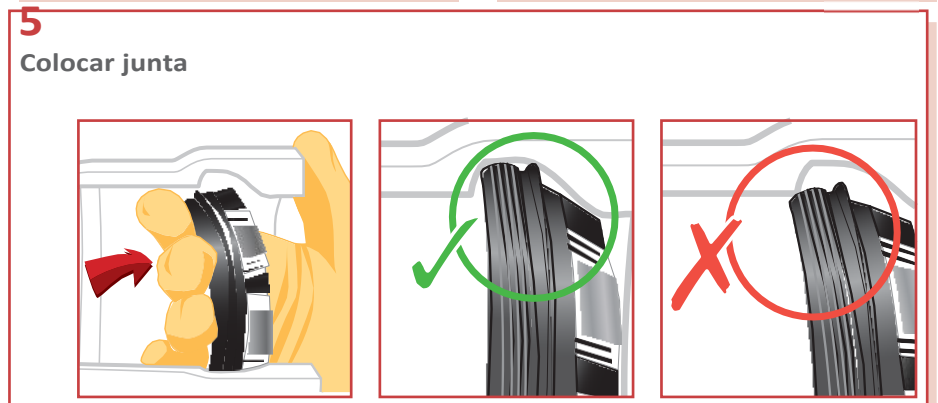
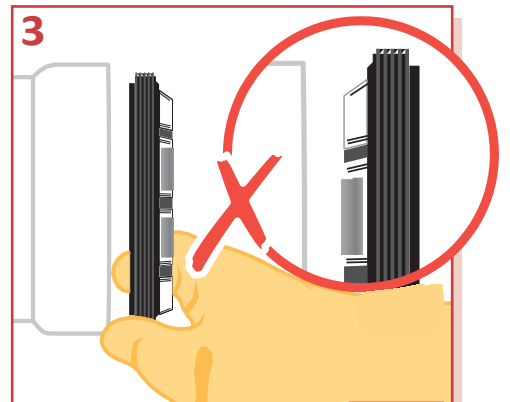
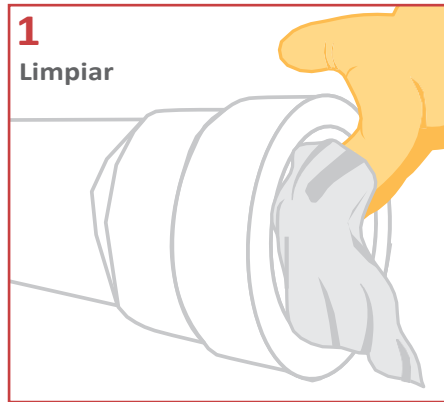


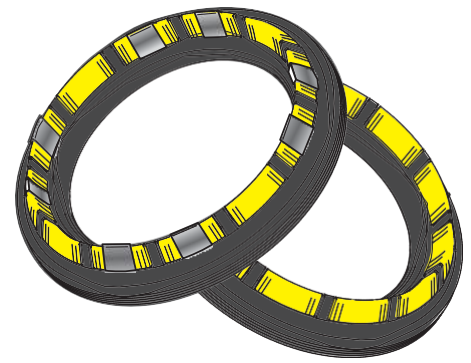
# TOPAZ



## Montaje de la Junta TOPAZ® y TOPAZ® VI TOPAZ® o TOPAZ® VI – Recomendaciones de instalación



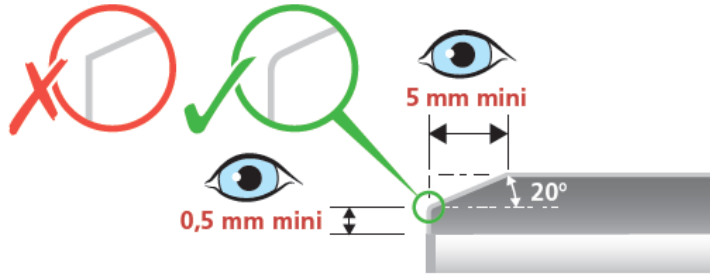
# TOPAZ



## Montaje de la Junta TOPAZ® y TOPAZ® VI TOPAZ® o TOPAZ® VI – Recomendaciones de instalación

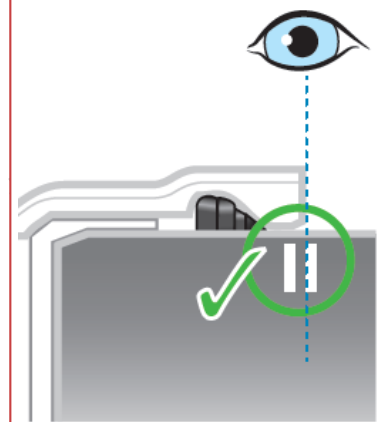
**9**

Verificar las dimensiones del chaflán



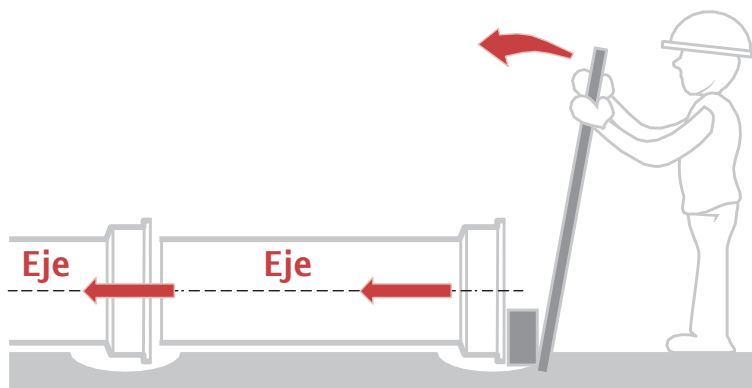
**11**

Verificar profundidad de enchufado



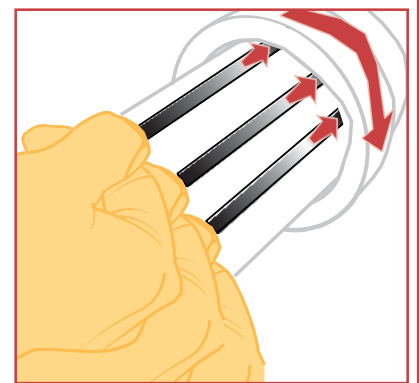
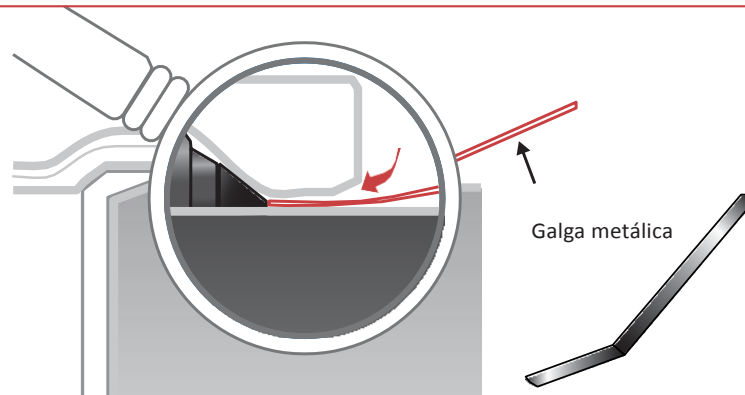
**10**

Enchufado alineado



**12**

Verificar la correcta posición de la junta



**13**

Dar la desviación angular a posteriori

